

LAWRENCE BERKELEY NATIONAL LABORATORY

CAG: Operations Update

Michael Brandt

Deputy Lab Director and Chief Operating Officer

January 24, 2022

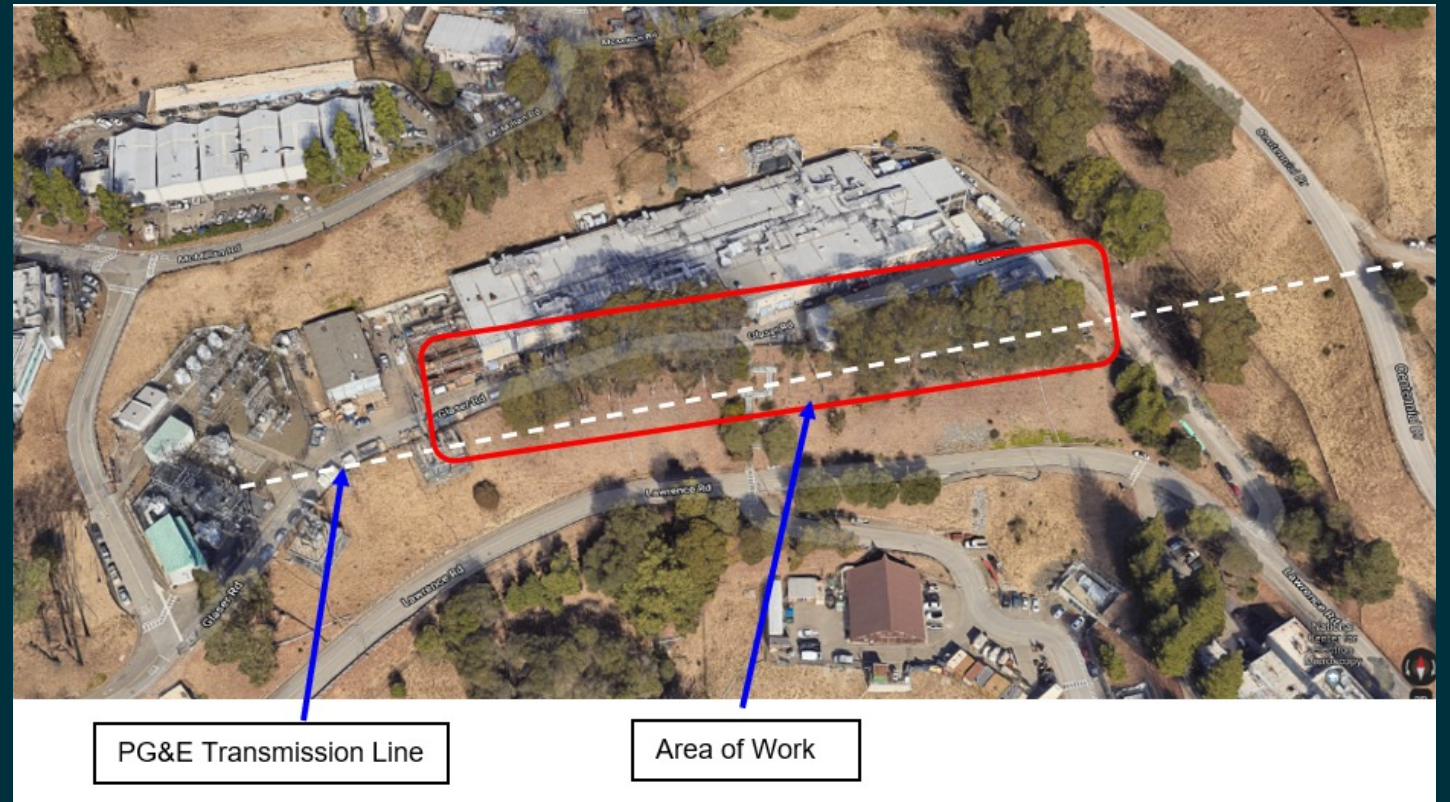
Berkeley Lab: Fire and Vegetation Abatement

- Completed clearing to north & west of Bldg 90.
- Partnered with Hillside Fire Safety Group for vegetation clearing
 - meeting Weds 1/26/22 to review & evaluate (incl area above Bldg 71)
- Removing dead/dying trees that pose fire risk or impact evacuation
- Partnered with PG&E to remove 40+ trees threatening the 150kV power line
- Submitting grant proposal to CAL FIRE for ~\$3m to expand UCB work ongoing since 2019 (application due 2/7/22)
- Return of the goats! Goats will be back in late Spring



Berkeley Lab: Fire and Vegetation Abatement

Collaboration with PG&E around Bldg 77





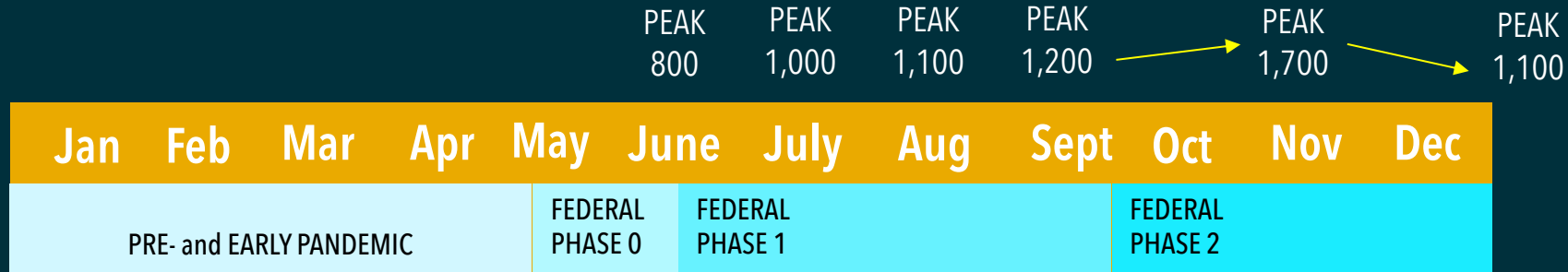
Tiffany C. Li ✓

@tiffanycli

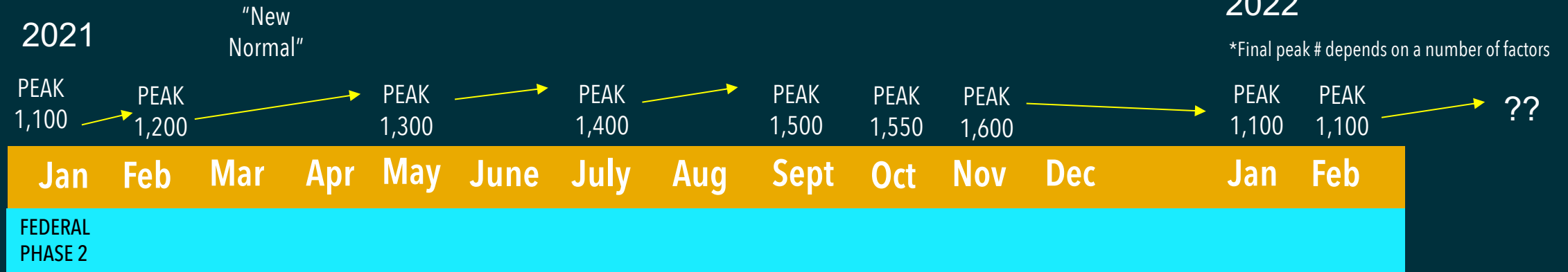
Stay indoors. But also return in person. Wear a mask. Not that one. The expensive one, that you can't find. Take rapid tests. Which you also can't find. But if you find them, don't buy them. Rapid tests don't work. You need PCR. There are zero appointments in your area.

Berkeley Lab's COVID Return to Work Timeline: Our Two-Year Journey

2020



2021



Berkeley Lab's Return to Work Plan: Controlled Site Access and Essential Health Protection Measures

Keeping each of us safe
at Berkeley Lab.

Health Pledge

I commit to following and maintaining Berkeley Lab's health and safety requirements and practices.

I understand the critical importance of following these practices, procedures, and guidelines to ensure the Lab's ability to continue to conduct research and promote a safe working environment.



covid.lbl.gov

Berkeley Lab COVID-19 Symptom Check

You are required to self-monitor for these symptoms each day before you enter any LBNL facility. Do not enter any LBNL facility if you have these symptoms (as compared to your baseline health status). Also, if you experience any of these symptoms during the week while at a site, call Health Services at 510-486-6266 for additional guidance.

1. Fever (greater than or equal to 100 deg F*) or Chills
2. Cough
3. Shortness of breath or difficulty breathing
4. Fatigue
5. Muscle or body aches
6. Headache
7. New loss of taste or smell
8. Sore Throat
9. Congestion or runny nose
10. Nausea, vomiting or diarrhea



RETURN TO WORK

LBNL Stewardship In Action

MANAGEMENT
APPROVAL



WPC



TRAINING



SYMPTOM
CHECKLIST



BADGE REQUIRED



FACE COVERING



HAND WASHING



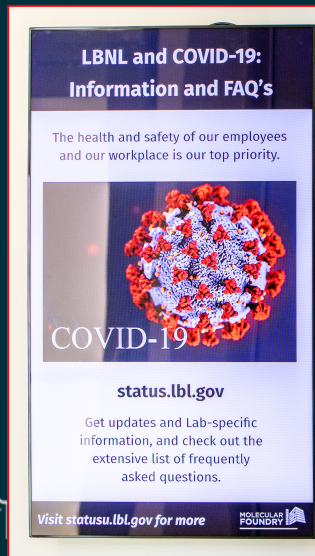
PHYSICAL DISTANCE



CLEANING



Berkeley Lab's Return to Work Plan: Gradual Resumption of Work



January 2022: Current Omicron Surge

Continue to Follow COVID Control Protocols

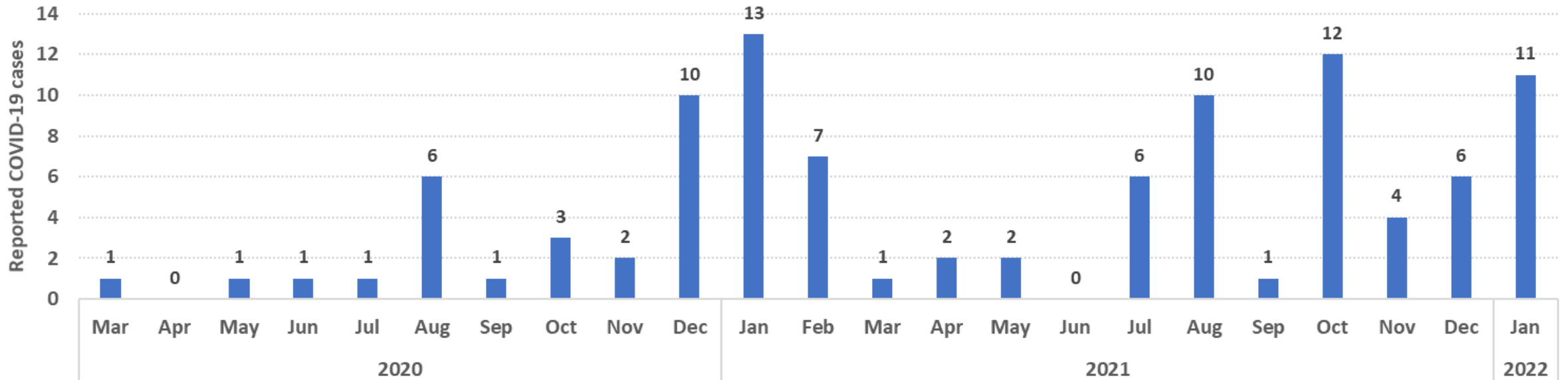
Current Control Measures

- Return to maximum telework with mission essential on-site staffing only
- Reduce on-site population to ~950 employees
- Follow established COVID Prevention Protocols
- Continue reporting confirmed COVID cases
- Require COVID boosters by Feb 28, 2022
- Employee COVID testing continues

2020 to 2022: Berkeley Lab COVID Cases

Effectiveness of Exposure Prevention Measures Reflected

Number of Reported COVID-19 Cases
By Date of Notification to Health Services



To date, Berkeley Lab has experienced only *one instance* of an on-site transmission.

Lessons Learned: Berkeley Lab's Healthy Safety Culture

- **Engaged and present line managers** anticipate and prevent events using hazard controls
- **Respectfully question apparent deviations** from established best practices
- **Follow risk management processes** and execute hazard controls
- **Workers take responsibility** and raise safety concerns



Berkeley Lab's healthy safety culture has resulted in lowest case rates
and lowest on-site transmission in the National Lab community

THANK YOU
QUESTIONS ??

